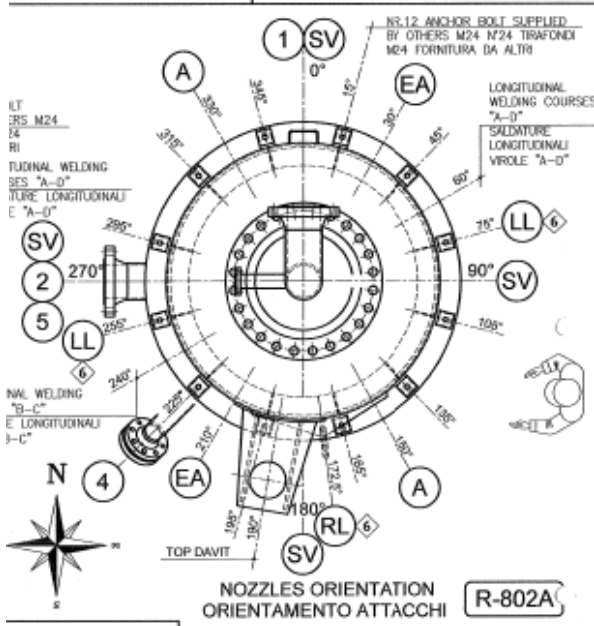
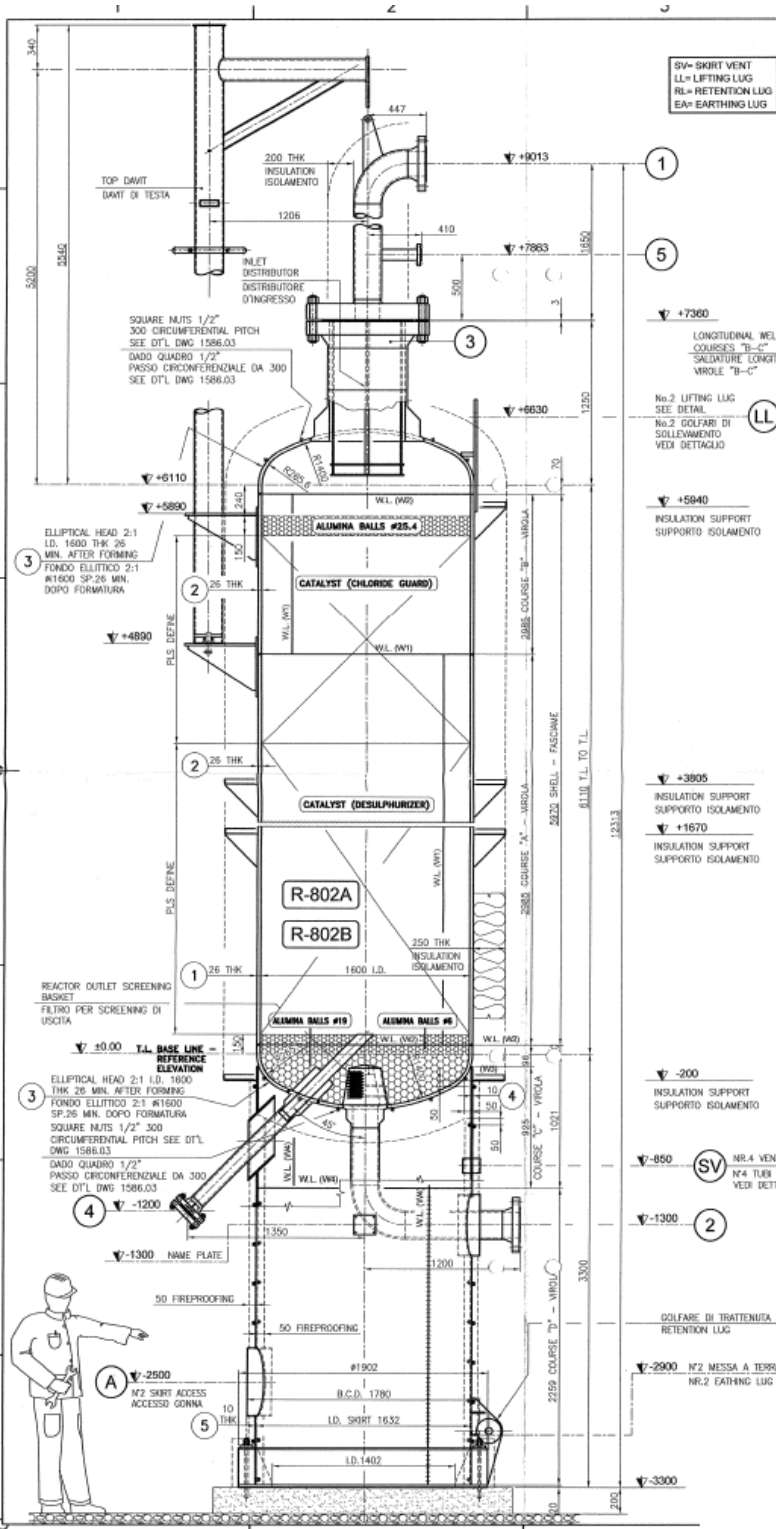


# ATTACHMENT No.1\_HGU\_R-802-A/B Drawings



5	1	2"	600#	VENT	LWN	RF	—	—	410	7863	—	—
4	1	4"	600#	DUMP NOZZLE	HRN — WN	RF	114.3 x 11.13	—	1350	—1200	SPIRAL WOUND	#7/8"x145
3	1	24"	600#	INLET	HRN — WN	RF	609.6 x 15	—	—	7360	SPIRAL WOUND	#1-7/8"x350
2	1	8"	600#	PROCESS GAS OUTLET	HRN — WN	RF	219.1 x 12.7	—	1200	—1300	—	—
1	1	8"	600#	PROCESS GAS INLET	HRN — WN	RF	219.1 x 12.7	—	447	9013	—	—
POS. Posit.	PEZZ. Pieces	D N Size	P N Rating	USASO Specification	TPG Type	TPG/NOZZA Type/Noz.	TRONCHETTO Nozzle	COLLARE DI RAFORFO Reinforcing	SPORGENZA DALL'ASSE Extension	ELEVAZIONE SULLA L.T. Offset from T.L.	OMBRIGLIONE Gasket	ISOLANTI Bells